

HORNET 12

Passive line array module

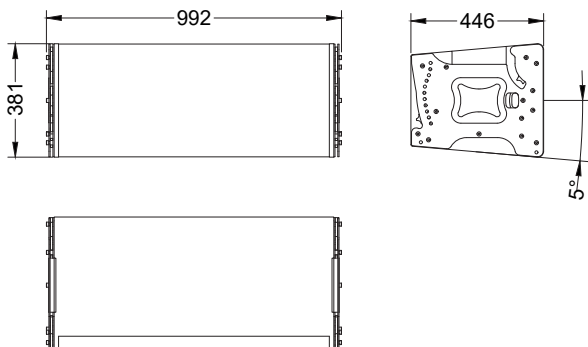
Flagship of MAG Audio line arrays, Hornet 12 is known to enter riders of many tours of pop and rock stars, as well as high-profile large-format night clubs and concert arenas. Extremely powerful 3-way all neodymium Hornet 12 units deliver ultimate sound pressure levels, while retaining control and steering of the sonic picture.

Based on own MAG Audio carefully developed highly-efficient neodymium cone transducers and HF drivers, Hornet 12 was created to be the most compact, lightweight and powerful system for mid and large-scale indoor and outdoor concerts, touring, sport events, and clubs. Fitted with proprietary design flying hardware, Hornet 12 stacking and flying is quick and easy, with link action easily understood even by a child.

Followed by numerous setup options, including flying directly from ground carts, Hornet 12 is the choice for mobile professionals, touring teams, and rental sound.



DIMENSIONS



CONNECTIONS

Use Hi-pass filter to prevent speaker damage and distorted sound by eliminating low non-audible frequencies in input signal.

Do not exceed input power ratings mentioned in specifications while exploiting the speaker system.

Speaker system comes with two Neutrik® Speakon heavy duty sockets for easy connection.

Connection	
Signal LF1 +	1 + Speakon pin
Signal LF1 -	1 - Speakon pin
Signal LF2 +	2 + Speakon pin
Signal LF2 -	2 - Speakon pin
Signal MF +	3 + Speakon pin
Signal MF -	3 - Speakon pin
Signal HF +	4 + Speakon pin
Signal HF -	4 - Speakon pin
Recommended amplifier power	LF1, LF2: 1000 - 2000 W MF: 400 - 800 W HF: 200 - 400 W on nominal impedance

SPECIFICATIONS

Frequency response (-10dB)	45 - 18000 Hz
Max SPL ¹	144 dB
Sensitivity (1W/1m)	99 dB
Sensitivity (1W/1m) (in detail)	99 dB LF / 107 dB MF / 112 dB HF
LF Transducer	2x12", 4" VC
MF Transducer	4x6", 1,5" VC
HF Driver	2x1,4", 2,8" VC
Nominal Coverage Angle (H x V)	110° x Depends on the number of cabinets
Impedance	8 Ohm LF1 / 8 Ohm LF2 / 8 Ohm MF / 8 Ohm HF
Nominal power ²	2600 W
Nominal power (in detail)	1000W LF1 + 1000W LF2 + 400W MF + 200W HF
Connectors	2x NL8MMPR Neutrik Speakon
Dimensions (WxHxD)	992x381x446 mm
Net weight	66 kg
Shipping weight	70 kg
Mounting	Integrated flying hardware; 0° - 10° sply angle
Enclosure materials	Plywood; wear-resistant paint
Grill	Steel grill, acoustically transparent foam

¹ - peak value, calculated according to AES 2 - 2012

² - based on transducer power measure according to AES 2 - 2012

SAFETY INSTRUCTIONS

1. Do not pour liquids on speaker system - this may cause driver cone destruction and unappealing speaker appearance. Do not allow direct sunlight on speaker cone in order to prevent premature failure. Do not install speaker system near open flames or heating elements.

2. Do not use speaker system with damaged speakON or speaker cable so as not to cause electric shock hazard or fire hazard.

3. Make sure speaker system is firmly set up on the floor, stage, or wall (where applicable).

4. While setting speaker system up onto an angled or slippery surface, make the necessary arrangements to avoid vibration-induced movement.

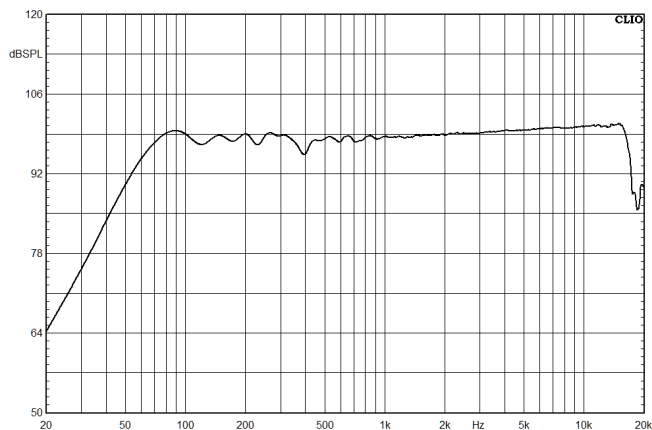
5. Speaker system is capable of delivering significant sound pressure levels. To avoid permanent or temporary hearing damage, prolonged exposure to sound pressure levels exceeding 90 dB should be limited.

HORNET 12

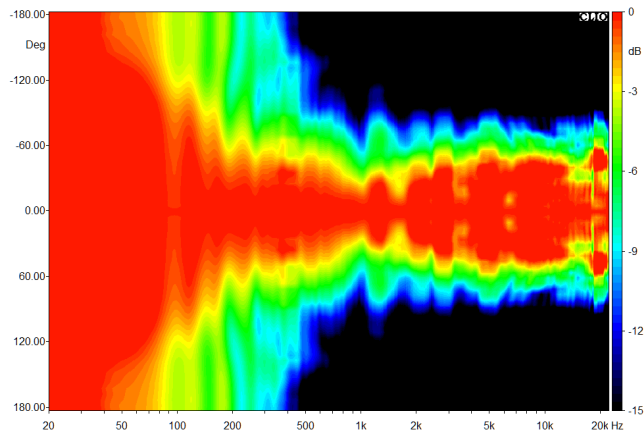
Passive line array module



ON AXIS FREQUENCY RESPONCE



ISOBAR DIAGRAM HORIZONTAL



ISOBAR DIAGRAM VERTICAL

